



# FOSSE WAY SCHOOL

## Statement of Purpose for Students

Review Due:	September 2022
Last Review	September 2021
Applicable to:	Fosse Way School, Fosse Way House
Reviewed by:	JT

At Fosse Way School everyone has high aspirations for all students and want them to do their best in all areas of school. We want you to enjoy everything and try to make sure we make this as best as we can for you. We hope that everything is happy and positive and that your self-confidence grows and you achieve your full potential.

There are lots of opportunities when you come to Fosse Way School/House. There will be opportunities to learn lots of things and staff will support you to do your best in a very individual way that suits you.

You will learn and experience lots of things. You will do lessons in school, go on trips, develop personal, social and health skills. The school will help to prepare all students for opportunities, responsibilities and experiences ready for your adult life.

The school and FWH values that were chosen by everyone are:

- Be Proud – we want to celebrate all successes and enable you to be strong advocates of yourself in the future.
- Be Kind – we want everyone to demonstrate how giving and receiving kindness is important to everyone.
- Be Resilient – we know you will face lots of challenges in life, we want to equip you with skills, strategies and attitude to make sure you flourish.

To make sure that you are provided with all of the support you need, Fosse Way School will make sure that all staff are given lots of opportunities to do training. They will use everything they learn to support you as best they can in school and FWH.

### **Fosse Way House**

Fosse Way House is the residential provision of the school. Up to eleven students can live here, everyone stays from Monday to Friday and goes home at weekends and the school holidays. All students who come to FWH have a diagnosis of autism. All staff who work in FWH also work in school so they are familiar to students and provide consistency for everyone.

FWH provides a 24-hour curriculum, this means that everyone will learn new skills, how to keep themselves safe and also do lots of fun activities in the local community. Like school, FWH aims to help all students prepare for their adult life. You will be supported to learn about and develop skills ready for your working when you are



## FOSSE WAY SCHOOL

older, you will be supported to develop your independence skills, to access the community and build friendships/relationships and also be given the chance to learn about a healthy lifestyle. This will all be done in a very calm, relaxed and consistent way, all students have a say in how they are supported to do all of these things and we want everyone to tell staff what they like to do, what they'd like to learn and how they do this. We want everyone to treat FWH like their home away from home.

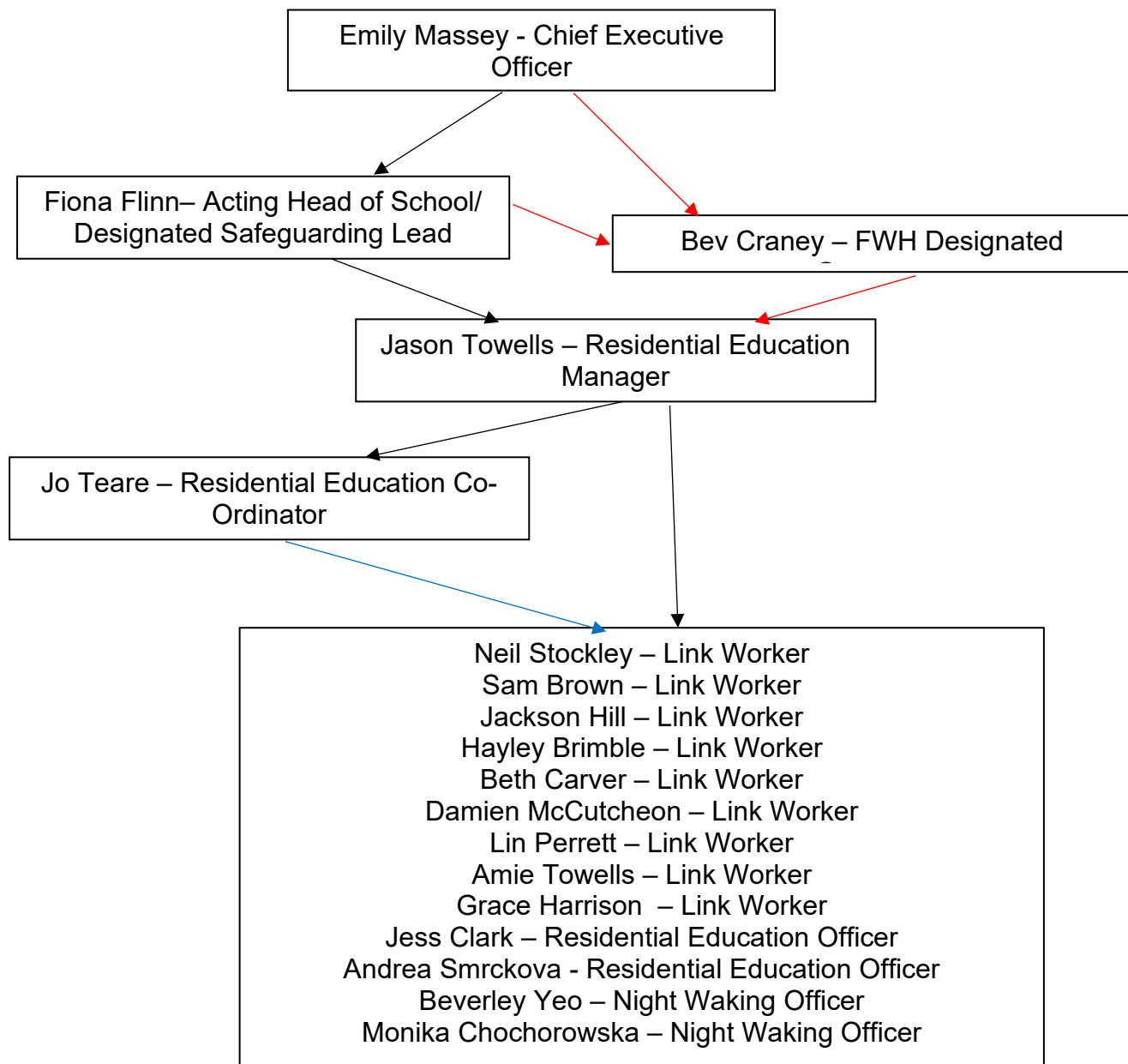
Students are encouraged to decorate their own bedrooms however they want, to choose what activities they do, to build friendships and to develop new skills. Everyone works towards their own targets and these are chosen based on individual development needs.

Like in school, all FWH staff are provided with lots of training to make sure they are providing the best support possible for all students. Staff make sure that they know all students well and can provide the right support, making sure that you are happy, know what is happening each day, helping you develop new skills and making sure that you have lots of fun with different activities.



# FOSSE WAY SCHOOL

## Line Management Organography



→ Line Manages.

→ Leads staff through evenings but does not line manage.

→ School Governor – not line manager